

TIME IS CONSTRAINED. SECURITY THREATS ARE NOT.



Your teams are overwhelmed with disconnected vendors and products.

You need:



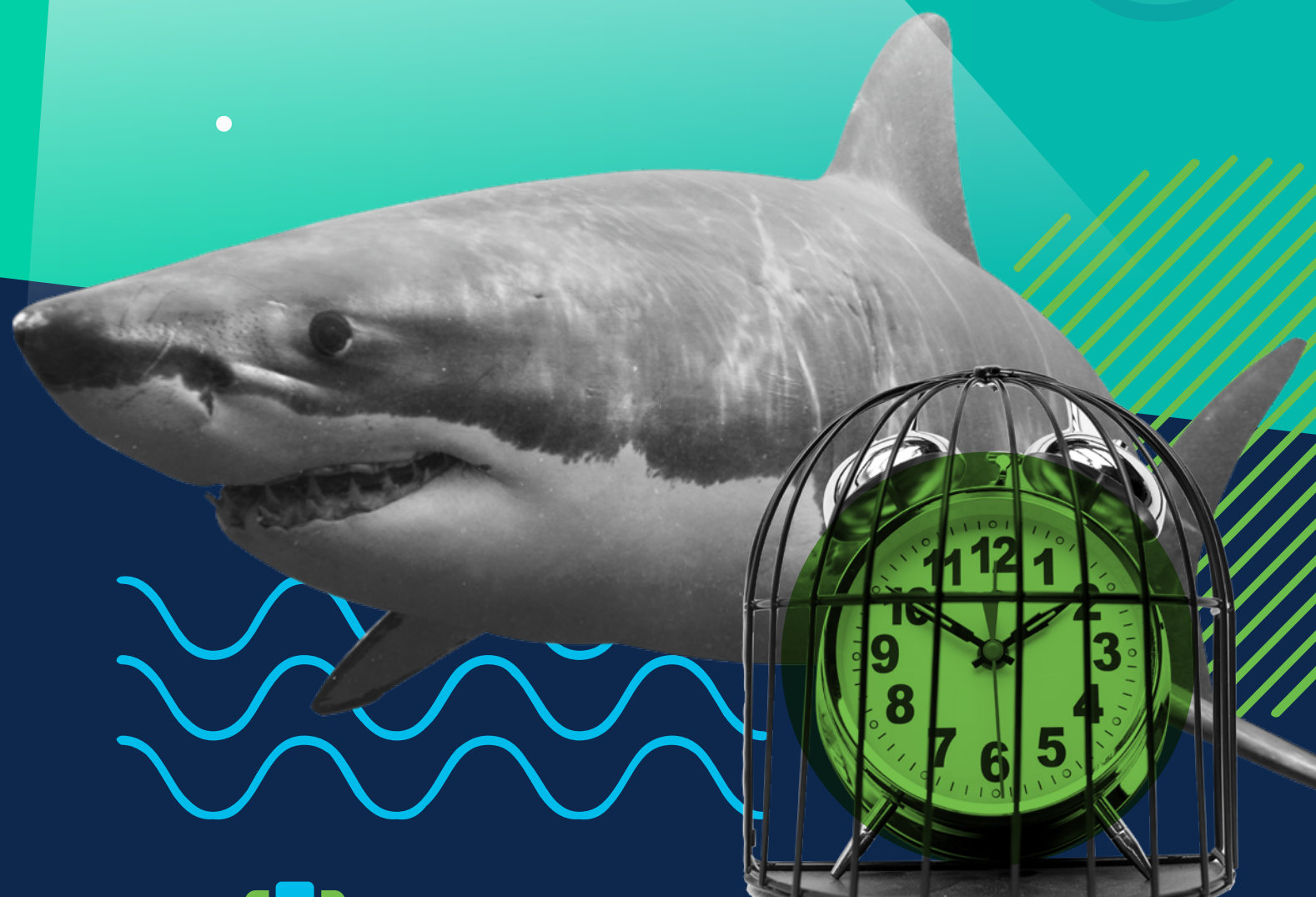
Faster response



More integration



Fewer tasks



You can't detect threats quickly if your products don't work together



81%

Of CISOs agree, orchestration between products is challenging

What if a single platform could bring all your security technologies together?

Every Cisco Secure customer is entitled to Cisco SecureX – a cloud-native experience that is built-in and not bolted-on.

Giving you:



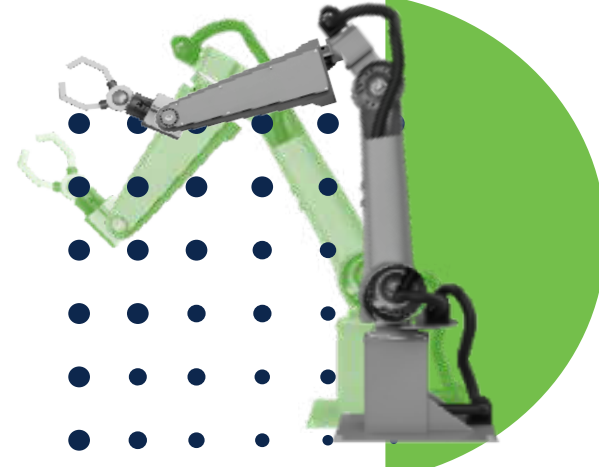
Simplicity

To integrate technologies instantly for a unified ecosystem



Visibility

To view threats from a single location and maintain contextual awareness



Efficiency

To eliminate friction with pre-built workflows and automation

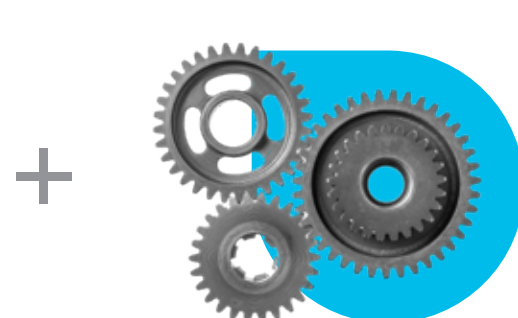


SecureX unifies your technologies

Move from a series of disjointed solutions to a fully integrated system bringing together:



Cisco portfolio



3rd party tools



Your teams

Designed with:



Built-in cross-portfolio detection and response



Works with existing SIEM and SOAR

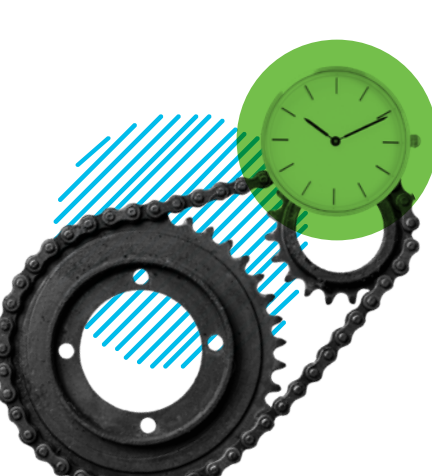


No additional licenses required

SecureX moves faster

Reducing attack response time by

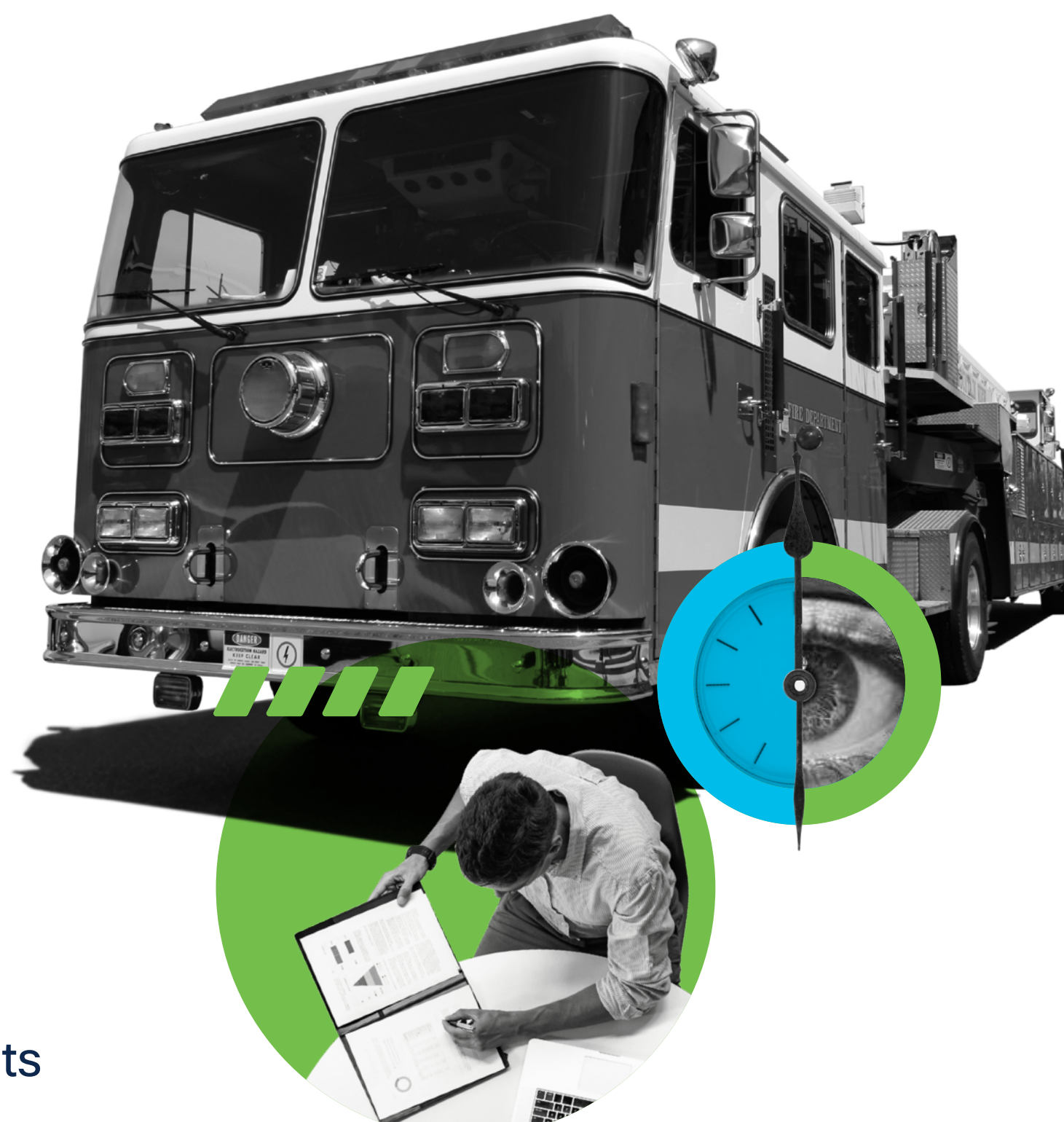
85%



Saving 100s of hours with automation



Visualizing threats in half the time

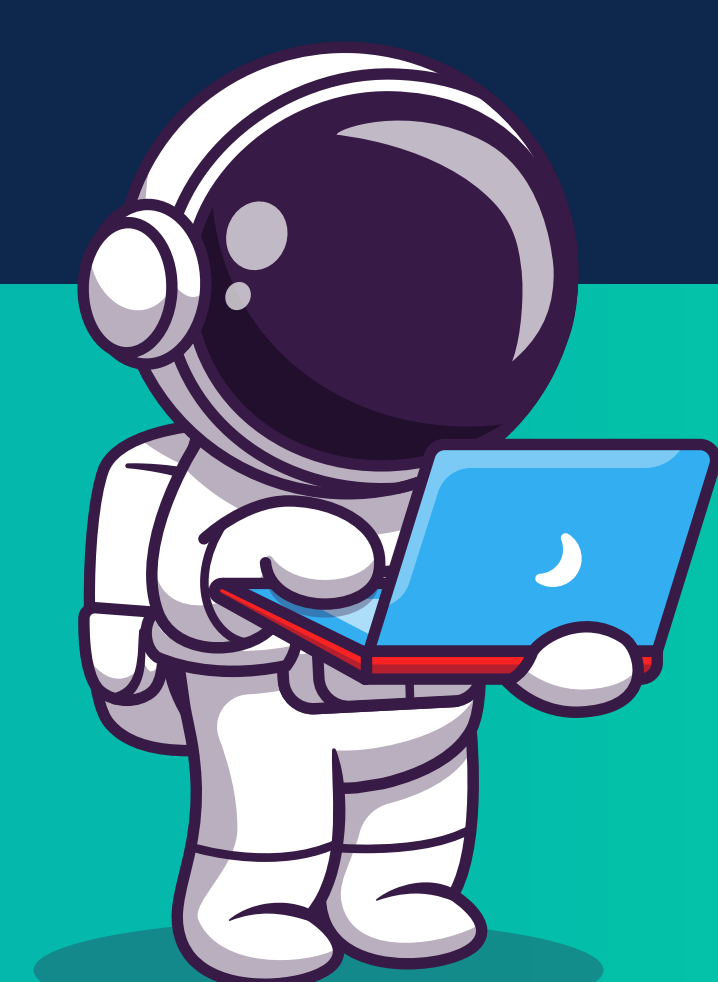


Ready to experience these time savings with the broadest, most integrated platform? Activate SecureX today.

[Learn more about SecureX](#)

[Get started today](#)

Source for statistics: TechValidate survey June 2020



About the ePlus & Cisco Partnership

ePlus and Cisco work together to help our customers reach their potential. We do this by combining ePlus's strategic expertise and lifecycle services with Cisco's vast portfolio of proven networking and security solutions. Together, we design, orchestrate and implement the custom, seamless solutions you need to achieve more agility, better business outcomes, faster ROI and greater resiliency. Let us help you realize your possibilities.